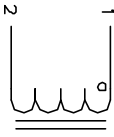


The information contained in this drawing is the sole property of CWS Coil Winding Specialists. Any reproduction in part or whole without written permission of CWS Coil Winding Specialists is prohibited.

REVISION HISTORY

REV	ECN	DESCRIPTION	SIGN & DATE		
A		PRODUCTION RELEASE	BY	DATE	DATE
			TDK	2/09/04	2/9/04



SCHEMATIC

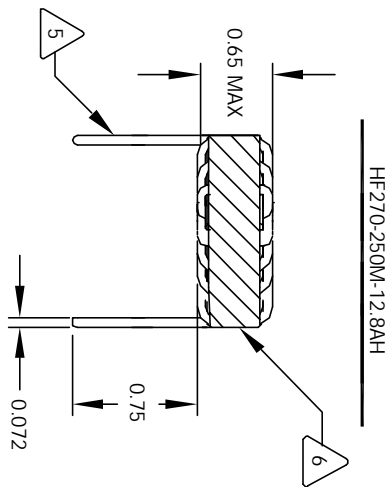
6 USING A PERMANENT MARKING METHOD
 MARK PART NUMBER AND REVISION, IF APPLICABLE
 IF NEEDED, WRAP INDUCTOR WITH GLASS TAPE
 TO THE CORE
 MUST REST FLAT ON PCB. LEADS MUST BE TANGENT
 FLUSH WITH THE COIL EDGE. AS SHOWN (I.E. COIL
 REMOVE INSULATION AND TIN LEADS 0.75 INCH

5 WIND COILS EVENLY SPACED AROUND THE CORE
 CONSTRUCTION:
 HI-POT TEST FOR WINDING TO CORE ISOLATION = 500VDC MIN
 CURRENT RATING : 12.8 AMPS, 40 °C TEMP. RISE, NO AIR FLOW
 DCR = 7.0 MILLI-OHMS MAX.
 DC BIASED = 12.8 AMPS, INDUCTANCE = 22 UH
 DC BIASED = 20 AMPS, INDUCTANCE = 20 UH
 INDUCTANCE = 25 UH +/-10% @ LOW DC BIAS, 1 KHZ, 250mV
 SPECIFICATIONS:

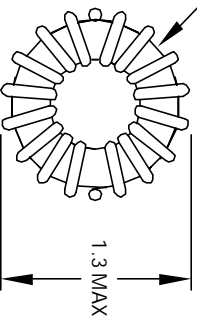
3 WIRE: UL RECOGNIZED 200°C RATED MAGNET WIRE
 CWS BYTEMARK OR OTHER APPROVED PART
 CORE: COATED HIGH FLUX TOROIDAL CORE

2 RATING CLASS B (130°C MIN.) REQUIRED
 MATERIAL: UL RECOGNIZED 94V-0 FOR FLAMMABILITY

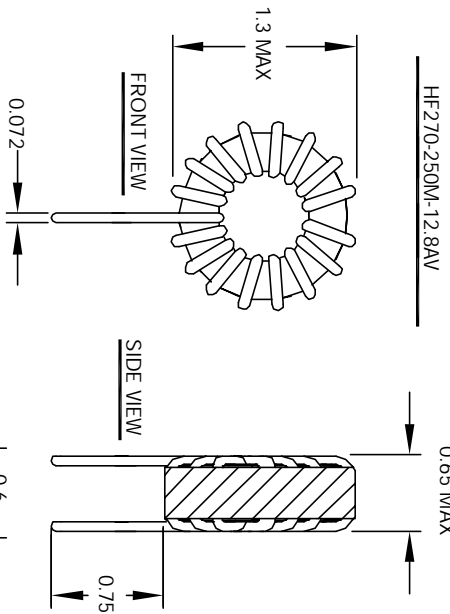
NOTES: TOROIDAL POWER CHOKES. ALL DIMENSIONS IN INCHES



FRONT VIEW

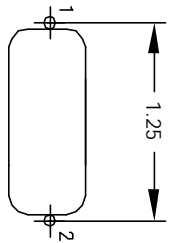


BOTTOM VIEW

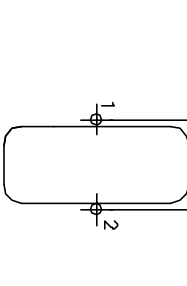


FRONT VIEW

SIDE VIEW



MOUNTING HOLES PATTERN



MOUNTING HOLES PATTERN

UNLESS OTHERWISE SPECIFIED	
DIMENSIONING AND TOLERANCE PER ANSI Y14.5M	ALL DIMENSIONS ARE IN INCHES AND (UNLESS STATED)
TOLERANCE INCHES: XXX=±.005 XX=±.015 TOLERANCE METRCS: XXX=±.127 XX=±.25	ANGLE PROJECTION
DO NOT SCALE DRAWINGS	

CODE IDENT	MFG. P/N	DESCRIPTION	ITEM NO.
AUTOCAD SOLIDWORKS SIGN	X	COWS COM, INC www.cowis.com	
DATE	DATE	CWS Coil Winding Specialist. 1510 E. Edinger Ave Unit B, Santa Ana, CA. 92705	
DRAWN TDK	2/8/04	TOROIDAL Power Chokes Toroid Inductor	
DESIGN JLAU	2/9/04		
ENGR. KSUM	3/5/04		
APPR. JLAU	3/6/04	SIZE: B	REV: B
SCALE: 2=1		HF270-250M-12.8A	